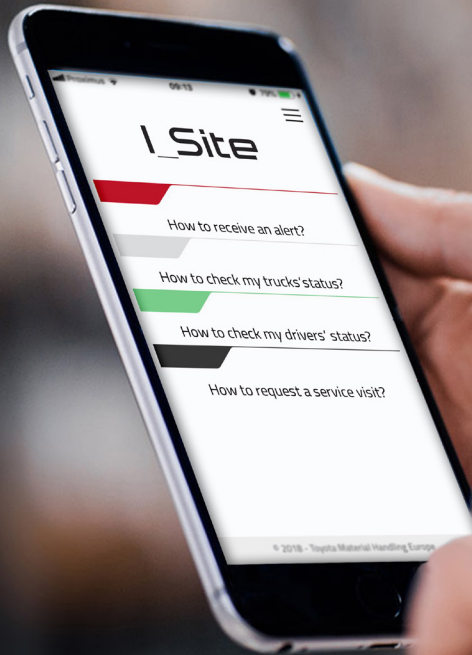


Smart trucks

with I_Site

HOW TO... ?
MEASURE AND IMPROVE



TOYOTA

MATERIAL HANDLING



How to...?

A smart truck from Toyota is factory-fitted with the technology needed to digitally monitor and manage the way it is operated.

That puts you in control, with the ability to access and analyse a full range of data, via the I_Site portal.

The following pages illustrate some popular ways of using the system.*



**Illustrations are based on operations that subscribe to full I_Site information option.*

How to...?

...stop unauthorised people from using a truck?

If an unauthorised or untrained person uses a truck there is a high risk of accident or injury, and associated liabilities and costs

Driver details

DELETE UPDATE

Driver *

PIN *

Profile

Shift Times

Driving License To

Additional Info 1

Additional Info 2

* Field is hidden for users without the role Driver Info

CLOSE UPDATE

Assigned machines

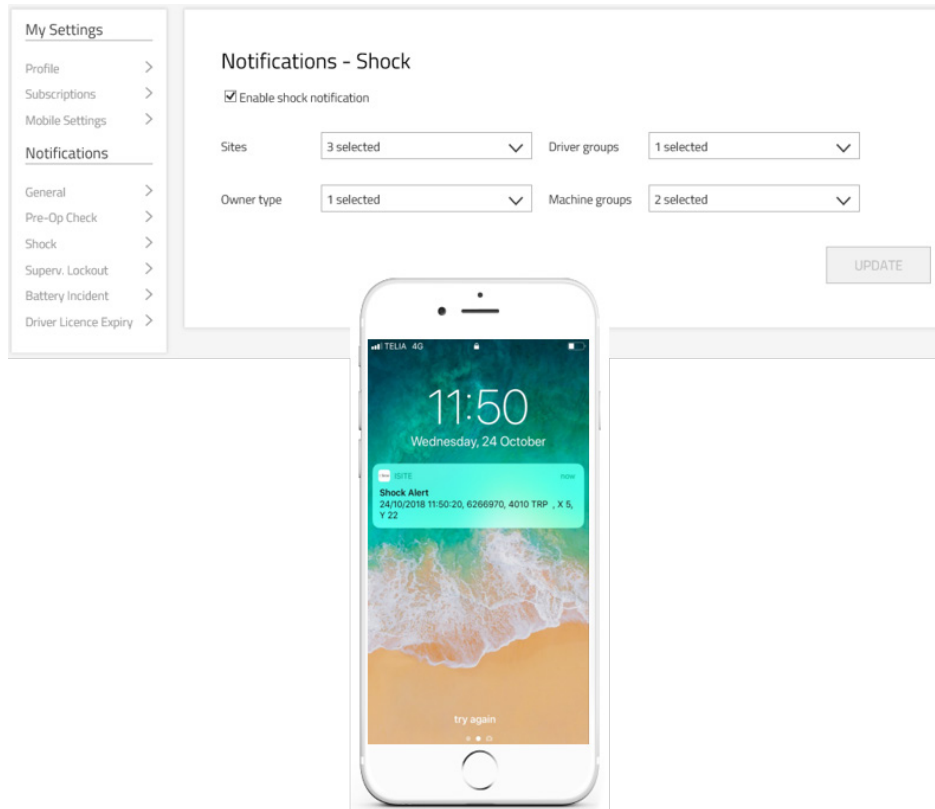
Machine	Model	Brand	Fleet No
6132109	RRE160	BT	0162
6134930	LPE200	BT	0168
6134977	LPE200	BT	0171
6132119	RRE160	BT	0170
6134794	LWE160	BT	0170

How to: Click on 'Manage Site' > 'Drivers' > 'Create driver' [enter details: name, PIN-code, license validity dates] > 'Create Driver' > 'Add machine' [select trucks] > 'Update' > 'Send SMS' – *only valid PIN-numbers will activate selected trucks*

How to...?

...receive an alert if a truck has an impact?

An impact usually means cost – damage to stock, racking or the truck itself. In the worst cases injuries.
Are you aware of all impacts?

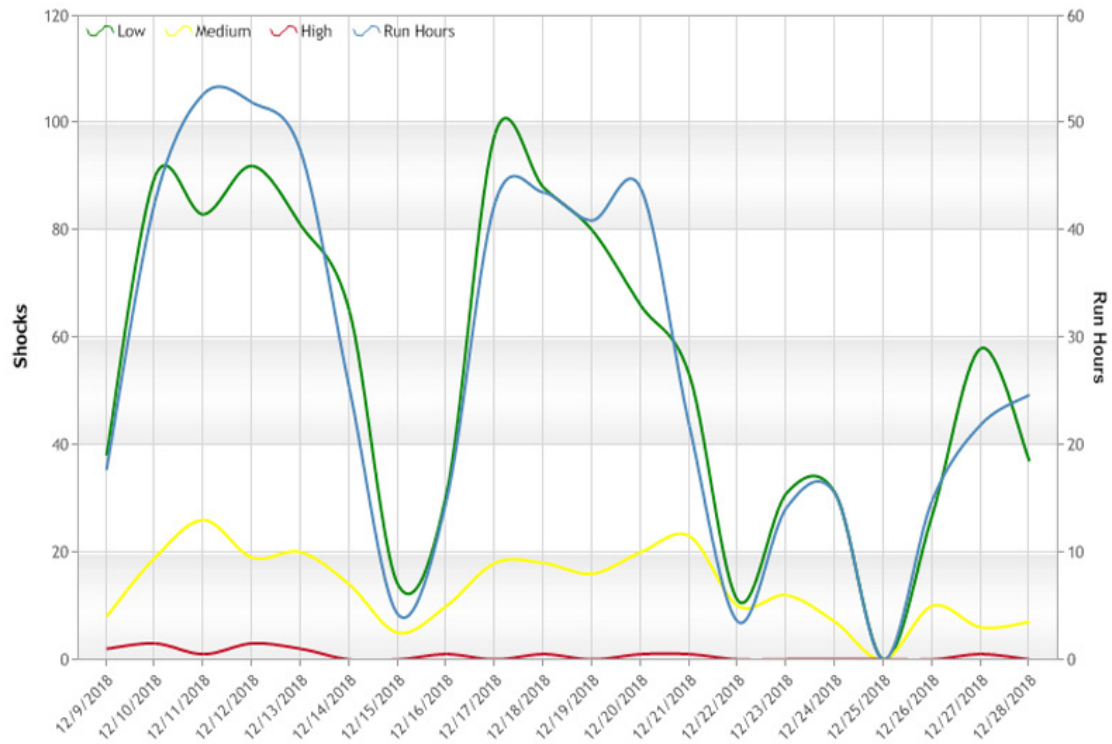


How to: Click on your 'user name' > 'settings' > 'notifications, shocks' > 'enable shock notification' > choose site. *Shock levels for notification are set at default levels, but can be tailored - with selected truck settings (eg creep speed) and reset rules*

How to...?

...see how often a truck is used,
and frequency of shocks?

How often is your truck needed?
Is your fleet of trucks optimised? Could you be saving money?

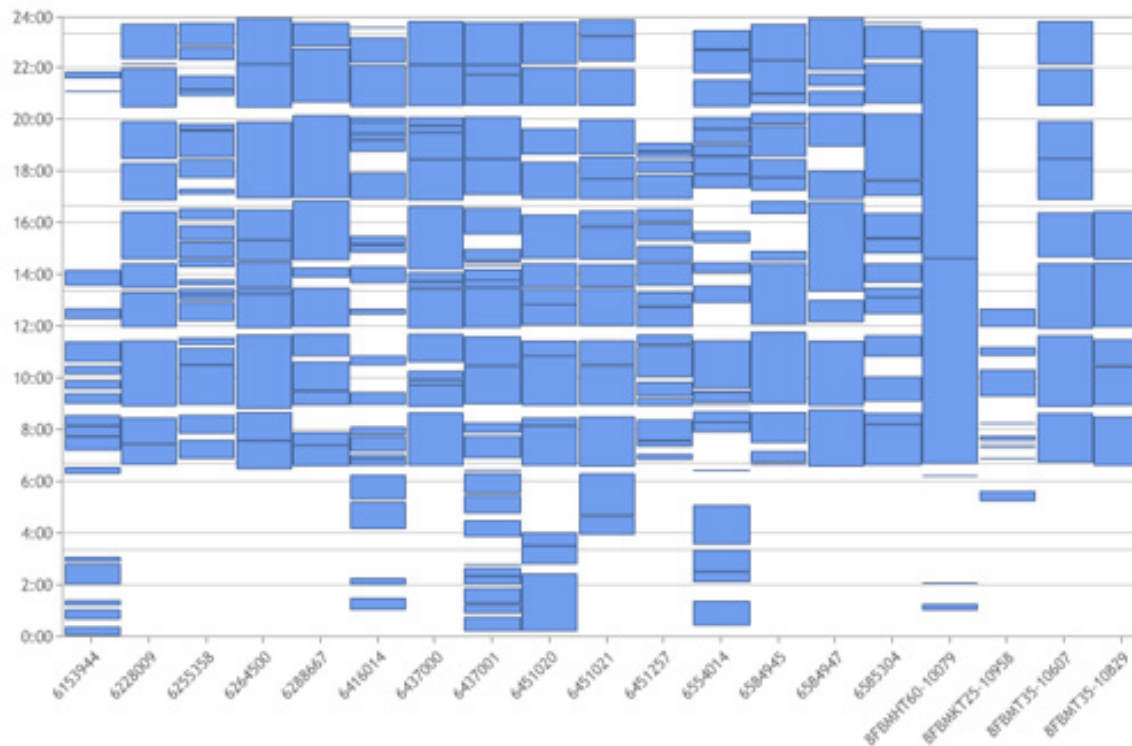


How to: Click on 'Shocks' > [enter machine number] > [chart icon]
 See how often the truck is used and corresponding shocks with recorded strengths

How to...?

...see which trucks are busiest?

Are some trucks working more than others?
Have you got the right mix of truck types? How much could you save?

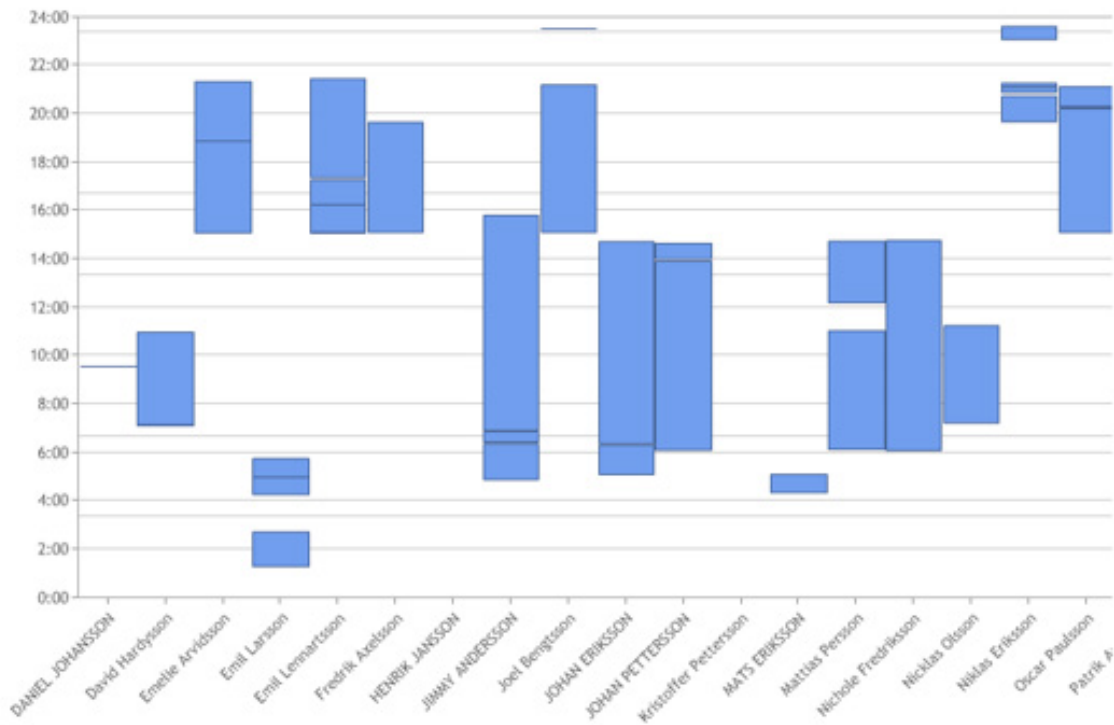


How to: Click on 'Machine utilisation tile' > Activity, machines > [chart icon]
[machine groups and time periods can be adjusted]

How to...?

...see which drivers are busiest?

Which operators are most active? Are you getting the most from your team?




How to: Click on 'Driver utilisation tile' > Activity, drivers > [chart icon]
 [driver groups and time periods can be adjusted]

How to...?

...ensure operators do
a safety check before
starting out?

Are you certain that every operator is doing the necessary safety checks before they start to use a truck?

Checklist Reach Trucks

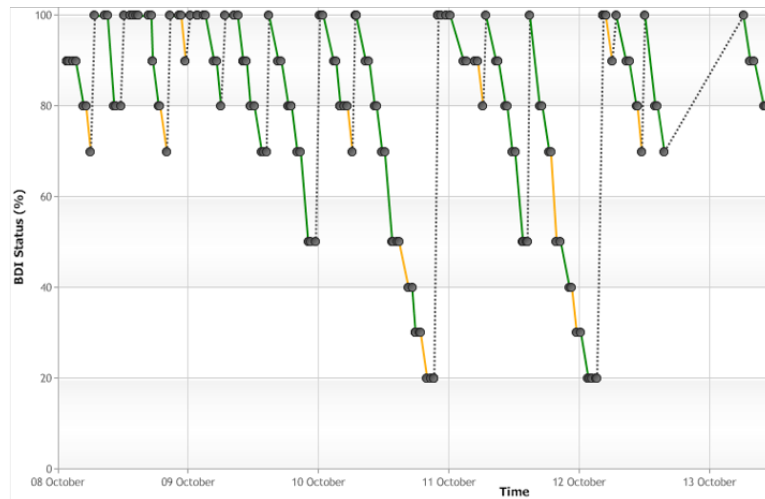
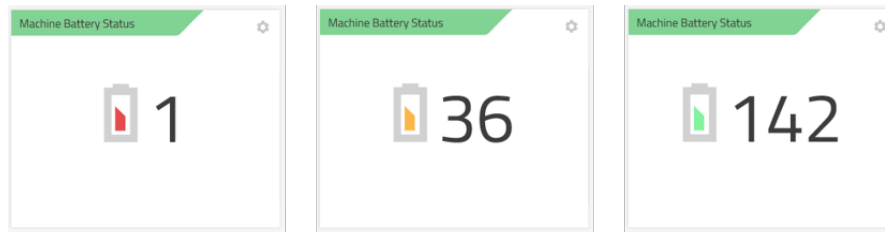
#1	Are the forks in good condition ?			
#2	Are the wheels or tyres damaged?			
#3	Are the battery cables or battery plug damaged?			
#4	Are the brakes working correctly ?			
#5	Is the steering working correctly ?			
#6	Does the truck drive OK ?			
#7	Are the chains or hoses damaged ?			
#8	Is the horn working ?			
#9	Is the beacon working ?			

How to: Click on 'Pre-op checks' > 'Checklist' > 'New checklist' [input list title] > 'Create new checklist' [enter checklist points and minimum duration time for each action] > 'select machine family' [add] > 'publish' > 'Send SMS'
Options to randomise sequence, determine frequencies etc.

How to...?

...check that the battery is
being charged properly?

Correct battery charging not only ensures trucks are available when you need them, but it also extends the battery's working life, saving money



How to: Click on 'Utilisation' > 'BSI symbol for selected truck from list'
For lead acid batteries you want to see complete charge and discharge cycles (not necessary with Li-ion)

How to...?

...keep a check on operators' licenses?

Are your operators' licenses up-to-date?
Is any training due?

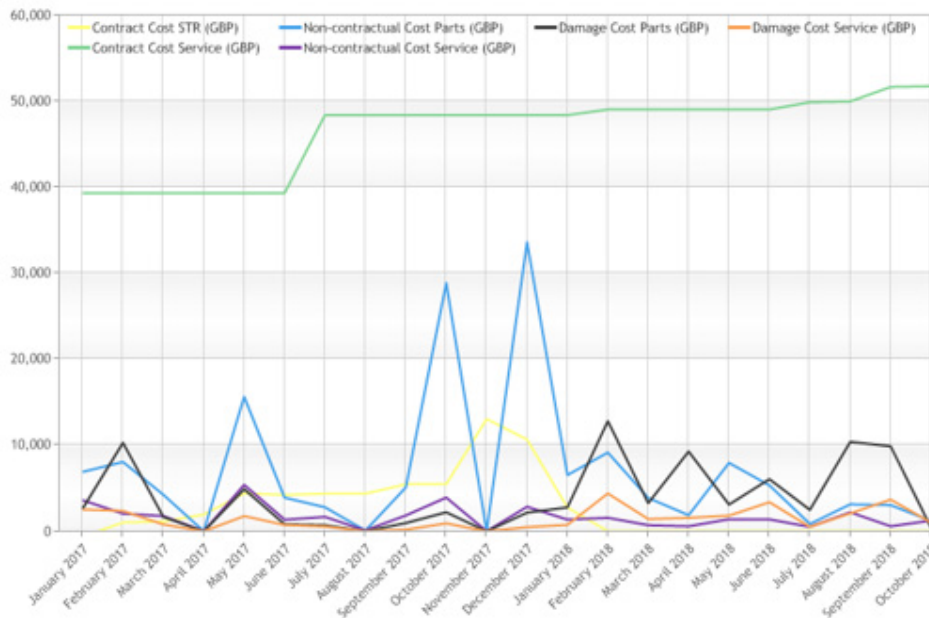


How to: 'manage site' > 'drivers' > 'licenses expiring' > [enter 'before date' or range] > 'search'

How to...?

...see how much you are spending on your trucks?

How much are you spending on routine maintenance?
How much are you spending on repairs? Do you know?



How to: Click on 'Myfleet' > 'Costs, sites' > [select period] > [click on chart icon]
 Filter options on type of cost

How to...?

...do so much more?

There is a limitless amount of information and report options that you can get from the Toyota I_Site system – particularly if you have a fleet of trucks and many operators.

If you would like more advice and support please talk to your Toyota representative.

Toyota Material Handling in Europe

Total coverage

The Toyota Material Handling network extends to over 30 countries in Europe with more than 4500 mobile technicians.

Always local – with global support

Wherever you are located in Europe, we are always local, due to our extensive coverage, but with the stability and back-up of a worldwide organisation.

Made in Europe

Over 90% of trucks we sell are built in our own European factories, in Sweden, France and Italy – all to TPS quality standards. We employ over 3000 production staff in Europe and work with over 300 European suppliers.

Approximately 15% of our European production is exported to other parts of the world.

